

**Logger/Baler—Model 5260****CALMAR** S.p.A.**Produces**

- 25" x 33" x Variable, 40-65 # / cu ft. Bales or Shreddable Logs
- Ideal For Processing
  - Car Bodies and Auto Parts
  - White Goods
  - Miscellaneous #2 Scrap
  - Sheet Iron
  - Steel, Copper or Aluminum Wire

**Customize the 5.260 To Fit Your Needs**

- Optional automatic baling cycle
- Optional radio remote control
- Can be equipped with or without crane

**Features**

- Large [16'-5" long x 7'-7" wide x 4'-6" deep] baling chamber
- Attached crane with comfortable cab, captain's chair and joystick controls
- HARDOX 500 abrasion-resistant baling chamber

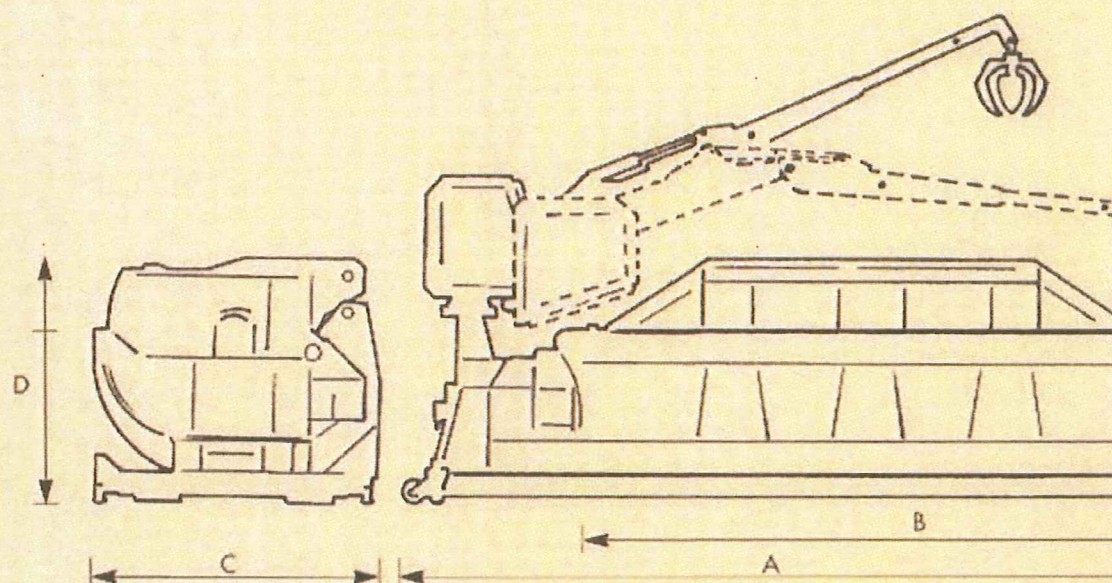
**Production Rate**

- 16-20 Bales per hour
- Average Log
  - 25" x 33" x 96" @ 40 lbs./cu ft. = 1,835 lbs.
- Average Bale
  - 25" x 33" x 25" @ 65 lbs./cu ft. = 775 lbs.
- 6-8 Tons per hour Baling



# COMPACTOR

model P 4.260 - P 5.260



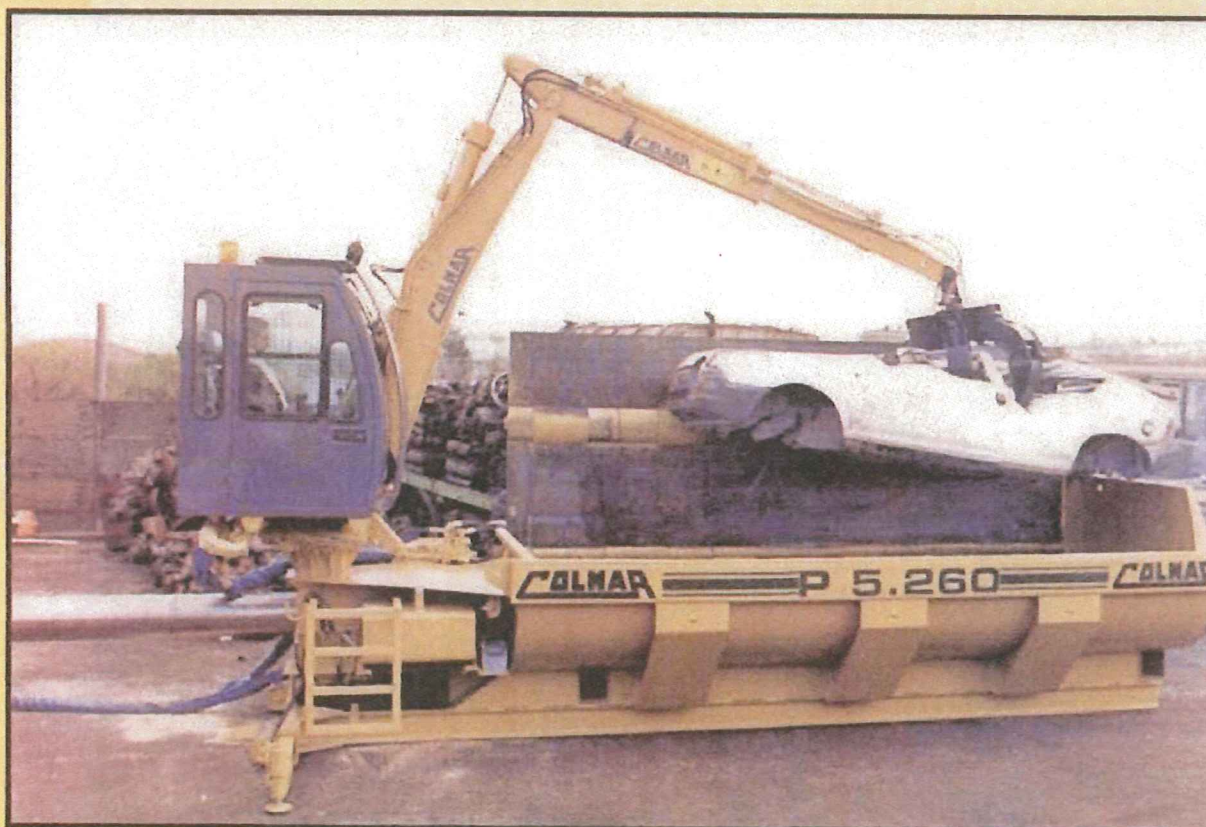
Our machines are in accordance with EEC Directives 89/392, 91/368, 93/44 and 93/68, with Directive 89/336 about the electro magnetic compatibility and are marked CE.

## DIMENSIONS

	P.5260	P.4260
<b>Overall length (A)</b>	7500 mm	7100 mm
<b>Length of container (B)</b>	5000 mm	4600 mm
<b>Overall width of portable machine (C)</b>	2500 mm	2500 mm
<b>Overall height (D)</b>	2750 mm	2750 mm
<b>Overall height of fixed machine (E)</b>	3850 mm	3850 mm
<b>Weight of machine fully equipped</b>	21000 kg	18000 kg

## DIMENSIONS AND QUANTITIES OF BALED MATERI





## LOADING BOOM ARM

Rotation produced by radial piston hydraulic motor coupled to single-stage epicyclic speed reducer pinion in mesh with externally toothed slewing ring supported by a double row ball bearing. Dual external brake valves assembly.

<b>Slewing ring diameter</b>	600 mm
<b>Rotation - continuous</b>	360° with radio control
<b>Rotation - non continuous</b>	270°
<b>Max outreach</b>	6500 mm
<b>Total weight of crane with end attachment</b>	2000 kg
<b>Max load capacity</b>	1500 kg
<b>Orange-peel grab</b>	280 lt



## FUEL AND OIL CAPACITIES

<b>Fuel tank</b>	200 lt
<b>Diesel engine cooling fluid</b>	35 lt
<b>Engine oil</b>	15 lt
<b>Slewing speed reducer oil</b>	3 lt
<b>Power takeoff</b>	6 lt





## ENGINE

<b>Make and model</b>	PERKINS	AIFO
<b>Diesel cycle</b>	diesel	diesel
<b>No. of strokes</b>	4	4
<b>Cylinders</b>	6 in line	6 in line
<b>Bore x stroke</b>	100 x 127 mm	104 x 115 mm
<b>Total capacity</b>	6000 cm <sup>3</sup>	5900 cm <sup>3</sup>
<b>Max power</b>	99 kW (135 HP)	90 kW (122 HP)
<b>Fuel</b>	diesel	diesel
<b>Cooling</b>	water	water
<b>Engine compartment</b>	soundproofed	soundproofed



## ELECTRIC SYSTEM

<b>Operating voltage</b>	4 V
<b>Alternator</b>	45 A
<b>Starter motor</b>	4 kW
<b>12 V batteries in series</b>	2 x 100 Ah



## HYDRAULIC SYSTEM

<b>1 x fixed-displacement axial piston pump, max flow rate</b>	60 l/min
<b>max operating pressure</b>	300 bar
<b>1 x gear pump, max flow rate</b>	75 l/min
<b>max operating pressure</b>	170 bar
<b>1 x gear pump, max flow rate</b>	34 l/min
<b>max operating pressure</b>	220 bar
<b>max pressure in servo controls circuit</b>	30 bar



## MATERIALS USED IN CONSTRUCTION

Structure: WELDOX 700 - T 1 A steel. Container: Hardox 500 abrasion-resistant steel.



## OPERATOR'S CAB

Features hydraulic tilt mechanism, steel sheet construction, sound insulation, windows in safety gl



# COLMAR

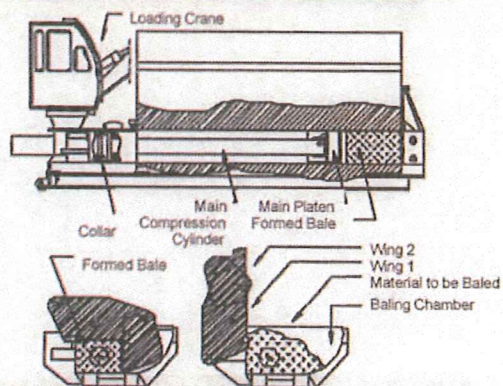
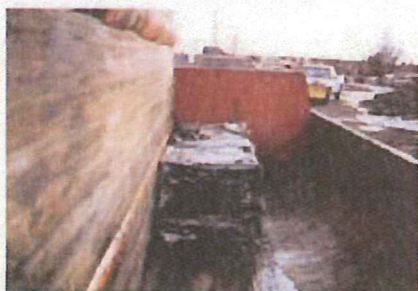




# S P E C I F I C A T I O N S

## Logger/Baler—Model 5260

**COLMAR** S.p.A.



### Cylinder Forces:

- Primary wall cylinder force 2 x 128 Tons = 256 Tons
- Secondary wall cylinder force 2 x 128 Tons = 256 Tons
- Main Ram cylinder force 166 Tons

### Machine Weight with Crane

46,200 lbs.

### Transportation Dimensions

24'-7" L x 8'-4" W x 9'-6" H

### Engine:

- Perkins 135 HP, Diesel, water cooled, 6 cylinder with sound dampened engine compartment

### Crane Specifications

- Maximum Reach 21 Feet
- Maximum Lifting Capacity 3,300 lbs.

