

MAC Model 5200 Baler

Powerful solutions in ferrous and non-ferrous baling.



The Workhorse

Developed for high density baling of both ferrous and non-ferrous metal, MAC's Model 5200 excels in a broad range of materials including loose steel sheet, clips and trim stock. A real workhorse, the Model 5200 baler is capable of producing bales measuring 16-inches square by variable lengths at a rate of 55 - 60 per hour. Bale densities vary according to material but average in the 165 lb./cu. ft. range for ferrous material and 50-65 lb./cu. ft. for aluminum.

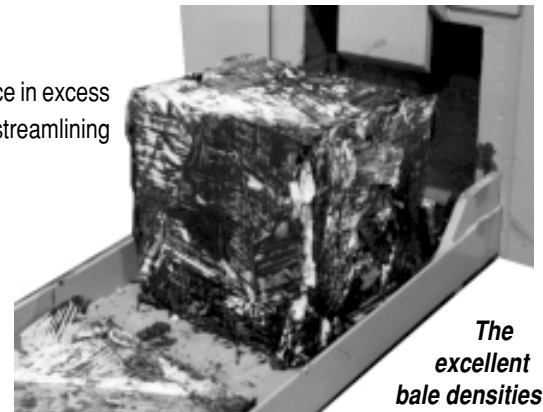
User-Friendly Baling

Designed for ease of use, the MAC Model 5200 offers both semi- and full-automatic operating modes. Built to withstand the rigors of metal baling operations, all surfaces which come

in contact with moving plates are lined with a wear plate of abrasion-resistant, high-alloy steel. Each of the two rams is stress-relieved and features box-type steel weldments for added durability. As with all MAC equipment, mobile models are available.

Reduced Pre-Processing

Oversized material is first downsized by a shear bar capable of producing a shearing force in excess of 380 tons. Doing so eliminates the need for most pre-processing, thereby further streamlining scrap processing operations and improving hourly tonnages.



The excellent bale densities offered by the

MAC Model 5200 — up to 165 lbs./cu. ft. for ferrous metals — make it ideal for a broad range of scrap processing operations.

Model 5200 Baler Specifications

Length — (overall)	26' 6" (8.06m)
Width — (including side ram)	19' 7" (5.9m)
Height —	9' 0" (2.7m)
Weight — (approx.)	75,000 lbs. (34,020 kg)

Hopper and Charging Box

Hopper — (standard)	72" wide X 118" long
Hopper — (optional)	up to 92" wide X 124" long
Charging Box —	52" wide X 16" deep X 112" long
Volume —	54 cubic feet
Clear Opening —	52" wide X 85" long

Custom Capabilities in Baling

MAC Corporation and each of its divisions prides itself in its ability to meet special processing needs. Custom equipment and modifications to existing equipment — like the mobile Model 5200 Baler shown at right — are examples of this commitment to meeting customers' needs.

