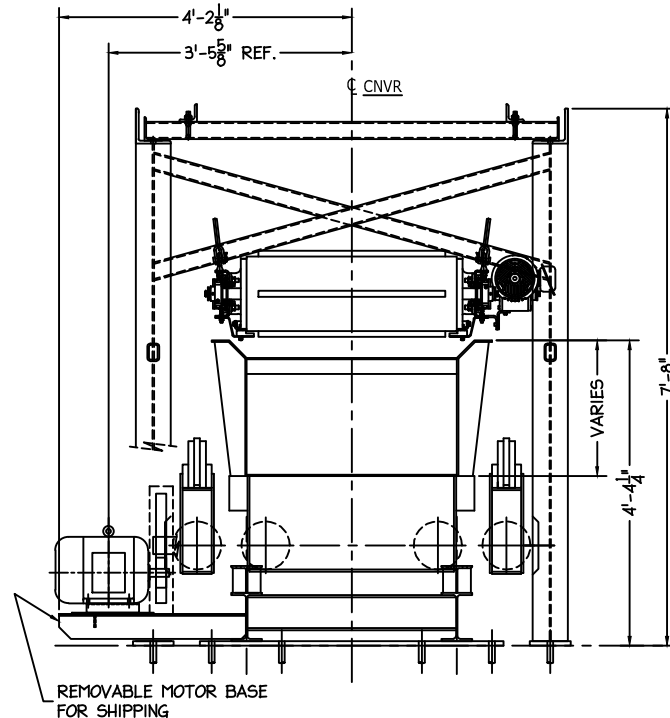
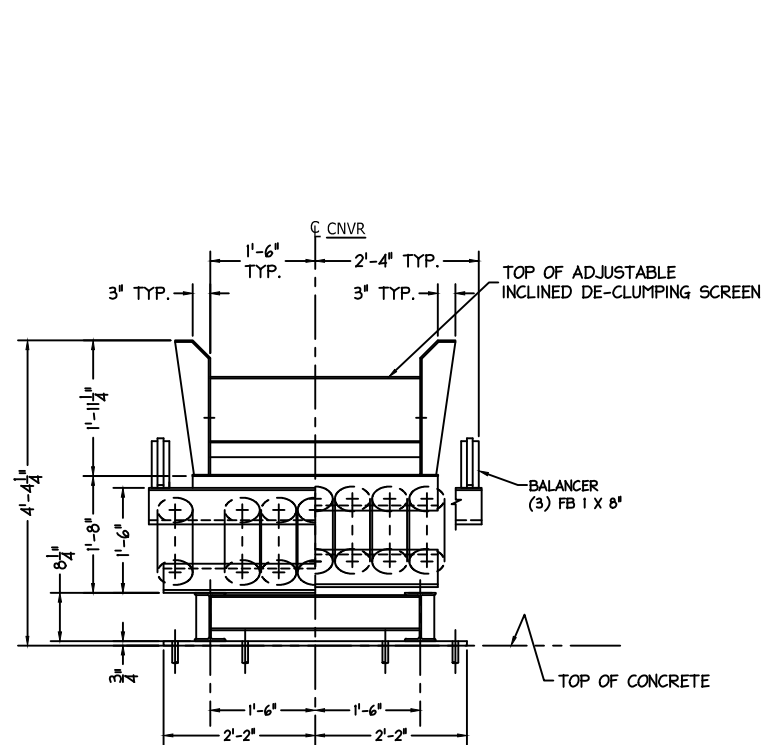
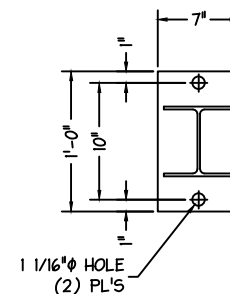
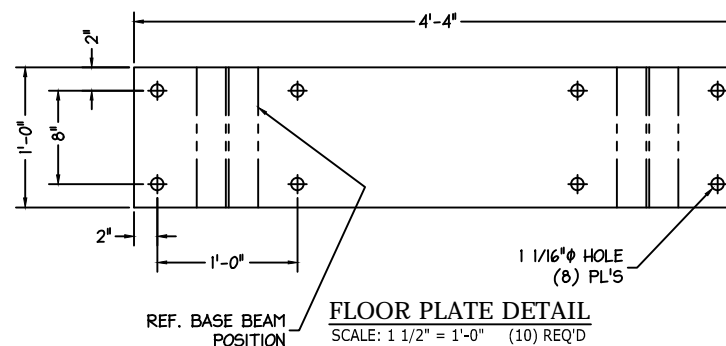


FLOOR PLATE NOTES

1: EPOXY FLOOR PLATES TO FLOOR WITH:
CONCRETE PASTE (LPL) SUITABLE
ABOVE 60° F. OR (SPL) WHICH MAY
BE USED IN A TEMPERATURE RANGE
OF 35 TO 60° F. PER MANUFACTURER'S
RECOMMENDATIONS (BY OTHERS).

CONTACT: BASF CORP BUILDING SYSTEMS
889 VALLEY PARK DR
SHAKOPEE MN 55379
(800) 438-9517
WWW.BUILDINGSYSTEMS.BASF.COM

2: USE NON-LEAD TYPE ANCHOR BOLTS
SUITED FOR FATIGUE APPLICATIONS
(BY OTHERS)



SECTION VIEWS TAKEN FROM 2335-00-GA-01

U.S. PAT. 7,090,080

MACHINERY LIST - XXHDB					
QTY.	PART NO.	DESCRIPTION	QTY.	PART NO.	DESCRIPTION
ROCKER ARMS			ECCENTRIC SHAFT		
24	ASRA30014	ROCKER ARM ASSEMBLY	1	SD-10-16-93-02-1 HC	ECCENTRIC SHAFT 4" DIA. w/ 7/16" ECC.
48	ASBUCRW125X0700	ROCKER ARM BUSHING BOLT ASSEMBLY	2	EC215-400-7250-437	ECCENTRICS 4" DIA. w/ 7/16" ECC.
48	BRBU400375	ROCKER ARM BRACKET 3/8"	2	XQC21596	PILLOW BLOCK BEARING 2 15/16" DIA.
REACTION SPRINGS			4	XCP40096	FLANGE BEARING 4" DIA.
50	RS1515	REACTION SPRING	1	2B200SF	SHEAVE
100	ASRSSCRW100X0300	REACTION SPRING BOLT ASSEMBLY	1	SF2 15/16	BUSHING
DRIVE (PAN)			MOTOR		
2	DS090	DRIVE SPRING NO. 9000 (RED)	1		TOSHIBA 10HP - 1800 RPM - FRAME 215T - TEFC GLOBAL SD PREMIUM EFFICIENCY MOTOR 230/460 VOLT, 3 PHASE, 60 HZ NEMA "B" DESIGN
4	ASDSSCRW150X0450TN150	DRIVE SPRING BOLT ASSEMBLY	1	2B48SDS	SHEAVE
1	SD-07-24-97-01-A	DRIVE SPRING CONNECTING BRACKET	1	SDS1 3/8	BUSHING
2	CA315075	CONNECTING ARM 3/4"	2	BX85	V-BELTS
DRIVE (BALANCER)			1		V-BELT GUARD 14 GA. 4" x 22" x 42"
2	DS090	DRIVE SPRING NO. 9000 (RED)	MISCELLANEOUS		
4	ASDSSCRW150X0450TN150	DRIVE SPRING BOLT ASSEMBLY	N/A		CENTRAL LUBRICATION KIT
2	SD-07-24-97-01-B	DRIVE SPRING CONNECTING BRACKET	N/A		METAL DETECTOR -
2	CA315075	CONNECTING ARM 3/4"	N/A		MAGNET TRAP
			N/A		STROKE CONTROL UNIT

THIS DRAWING WITH THE DESIGNS, IDEAS, AND DETAILS SHOWN HEREON IS THE PROPERTY OF ACTION EQUIPMENT COMPANY, INC., NEWBERG, OREGON, AND IS TO BE RETURNED UPON REQUEST. IT SHALL NOT BE USED, DISCLOSED TO OTHERS OR COPIED IN WHOLE OR IN PART WITHOUT EXPRESS WRITTEN AUTHORIZATION BY ACTION EQUIPMENT COMPANY, INC. ALL RIGHTS OF DESIGN OR INVENTION ARE RESERVED.

ACTION EQUIPMENT COMPANY, INC.

P.O. BOX 3100 NEWBERG, OREGON 97132
PHONE (503) 537 1111 FAX (503) 537-1117
WEB SITE www.actionconveyors.com

SAFETY

SAFETY HAS BEEN GIVEN CONSIDERATION IN THIS ARRANGEMENT. PLEASE REVIEW MAINTENANCE MANUAL PRIOR TO INSTALLATION.



SECTION VIEWS, FLOOR
PLATE DETAILS AND
MACHINERY LIST

DRAWN BY: JSR

DATE: 12/29/13

APPROVED BY:

DATE:

REV. DATE REVISION

DWG NO. 2335-00-GA-02