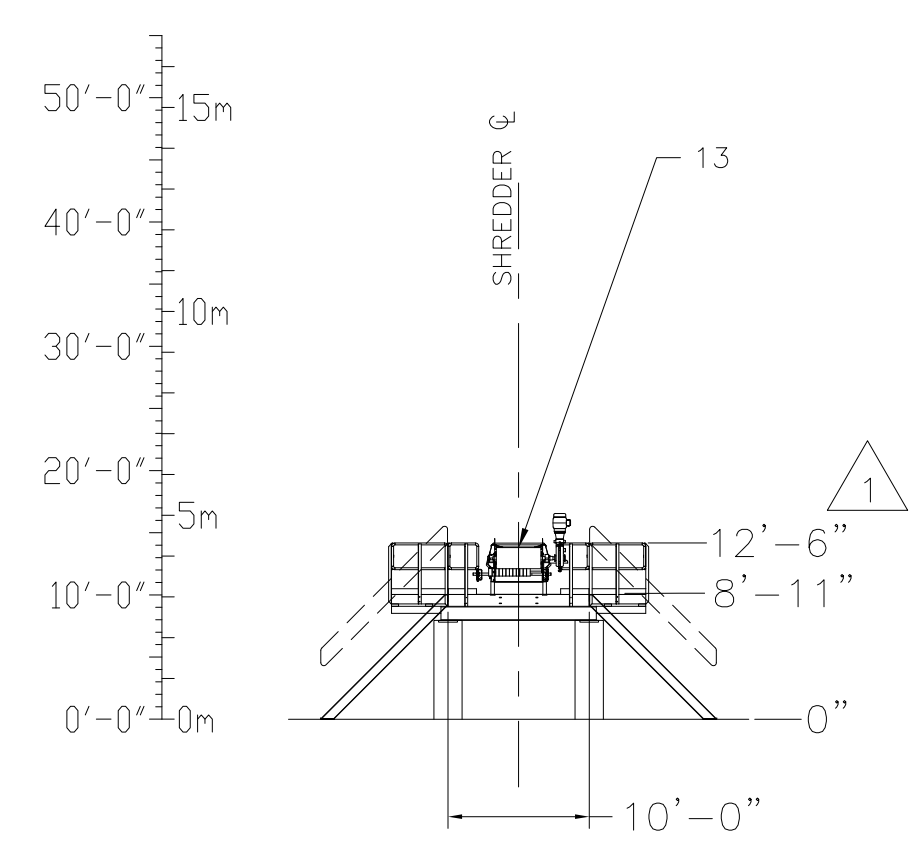
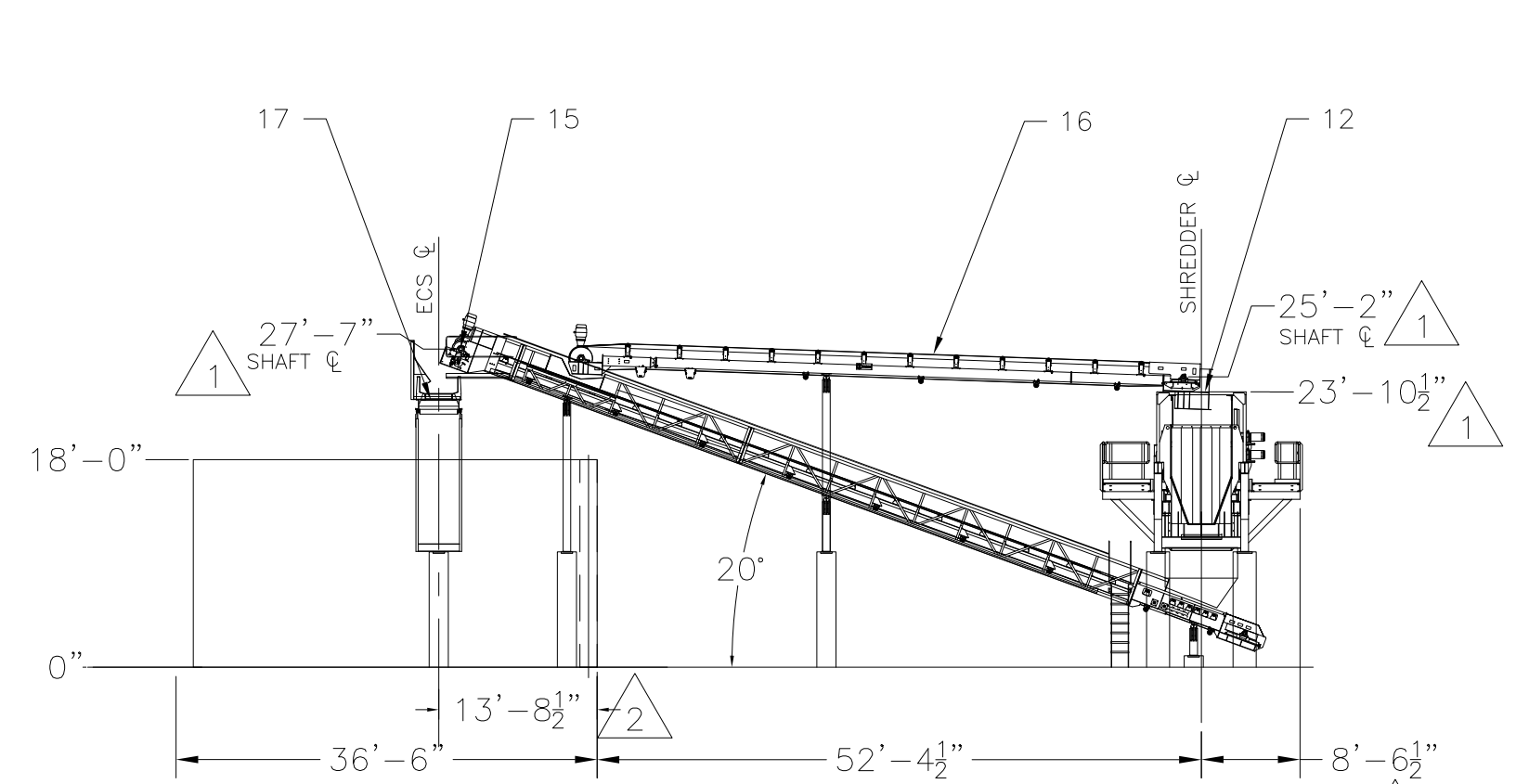


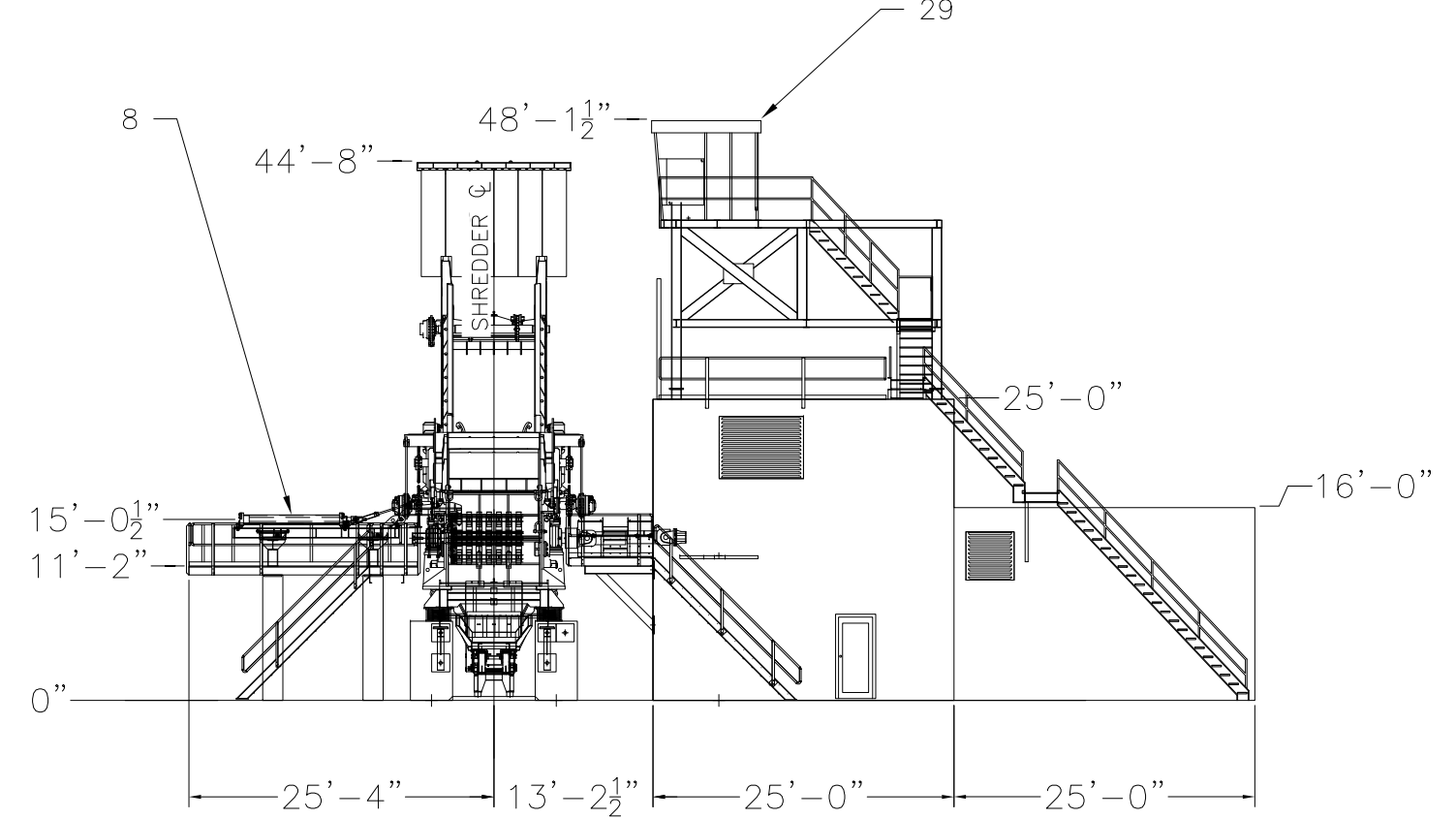
SECTION A-A



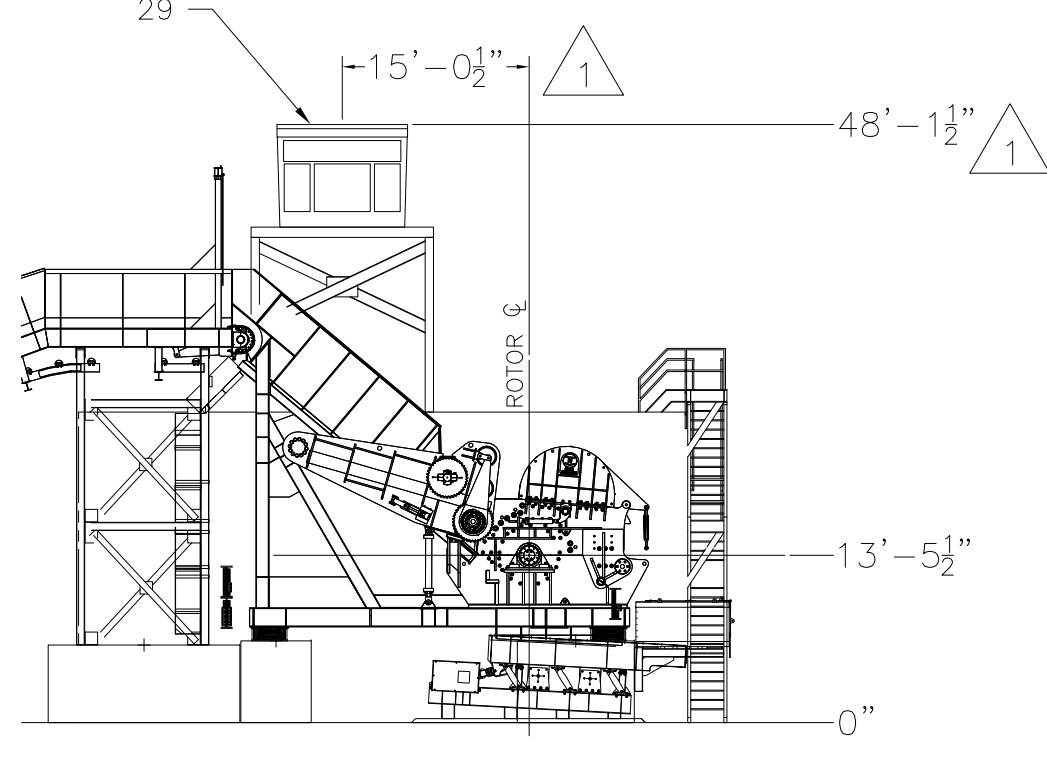
SECTION B-B



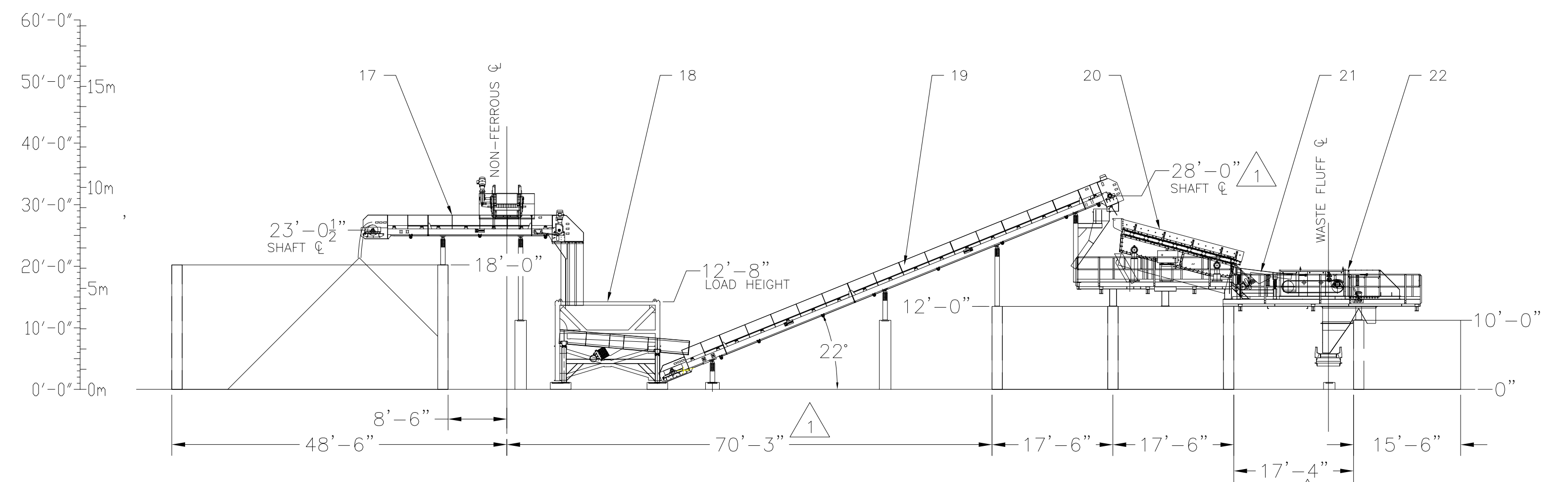
SECTION C-C



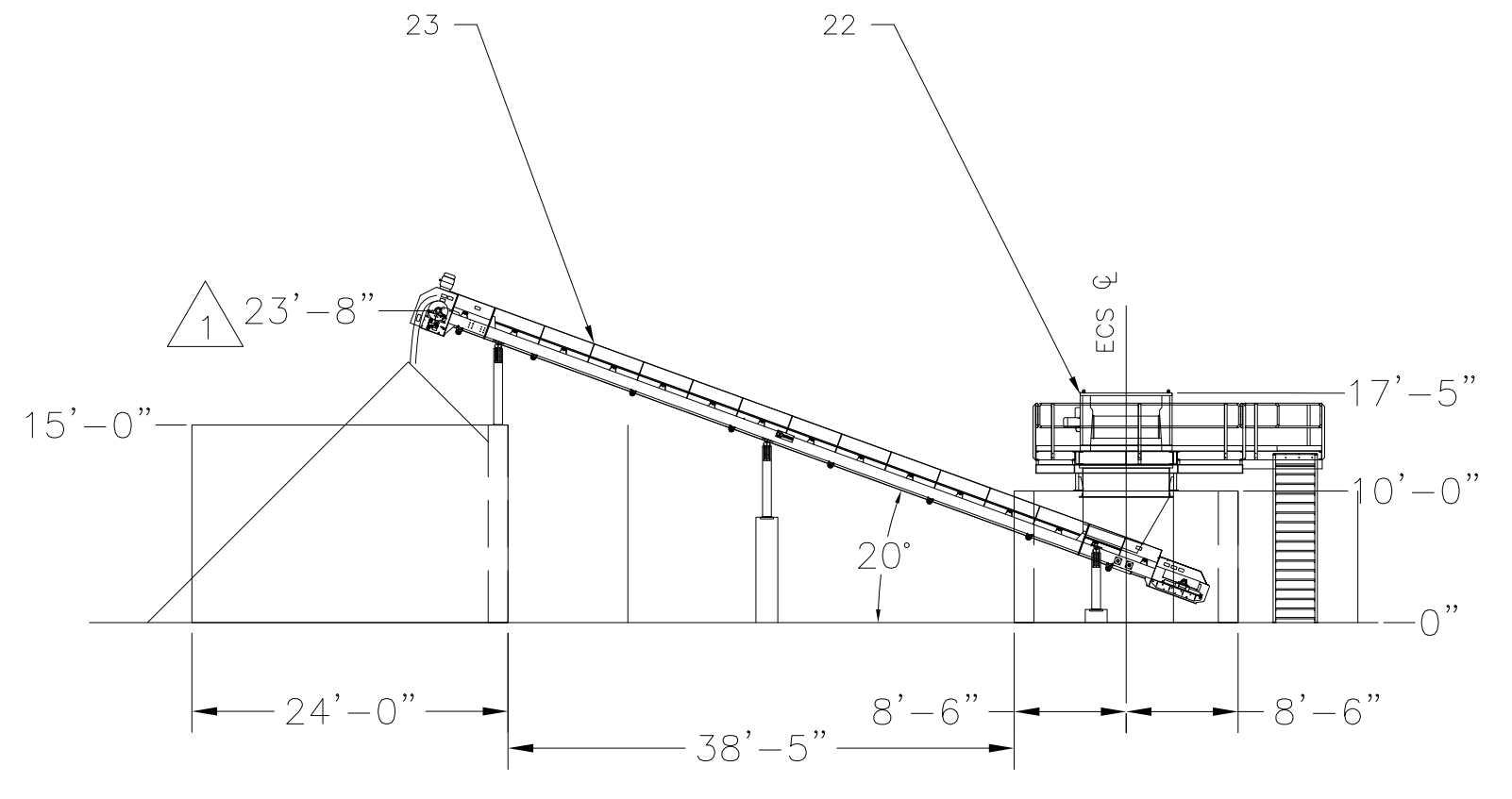
SECTION F-F



SECTION G-G



SECTION D-D



SECTION E-E

ITEM	DESCRIPTION
1	SHREDDER INFEED CONVEYOR
2	HEAVY DUTY FEED CHUTE W/ SUPPORTS
3	DOUBLE FEED ROLL
4	SHREDDER HOUSING ASSEMBLY
5	DISC ROTOR ASSEMBLY
6	HYDRAULIC POWER UNIT
7	BASE WELDMENT
8	HEAVY DUTY HAMMERPIN EXTRACTOR
9	SHREDDER SPRING ISOLATION SYSTEM
10	OSCILLATING PAN FEEDER
11	SHREDDER DISCHARGE CONVEYOR - 54" x 60'
12	DUAL DRUM MAGNET - 48" x 60"
13	FERROUS PICKING CONVEYOR - 36" x 30'
14	RADIAL STACKER CONVEYOR - 36" x 60'
15	NON-FERROUS TAKEAWAY CONVEYOR - 36" x 72'
16	TRAMP IRON RETURN CONVEYOR - 42" x 52'
17	REVERSING CONVEYOR - 36"x27'
18	METERING HOPPER
19	FLUFF TRANSFER CONV. w/ MAG HD - 48" x 68'
20	BIVITEC SCREEN, 1,600 X 5.2m (63"x117")
21	VIBRATING FEEDER FOR ECS, 57" x 8'
22	60" EDDY CURRENT SYSTEM
23	WASTE STOCKPILE CONVEYOR - 36" x 60'
24	2,000 HP WOUND ROTOR MOTOR
25	DRIVE SHAFT ARRANGEMENT
27	MAIN MOTOR STARTER PANEL
28	MOTOR CONTROL CENTER
29	OPERATORS CONTROL CABIN
30	ELECTRICAL CONTROL PACKAGE
31	BELT SCALE

- GENERAL NOTES:
- GROUND LEVEL SHOWN AT ELEV. 0", BUT ACTUAL ELEVATION WILL DEPEND ON TERRAIN SLOPE. GROUND ELEVATION TO BE DETERMINED BY CONTRACTOR.
 - GROUND SLOPE SHOULD BE MINIMUM 1% FOR RAIN WATER TO COLLECTION POINT.
 - CONVEYOR DESCRIPTION GIVEN AS BELT WIDTH [INCHES] x LENGTH-PULLEY C-C [FEET].
 - ACCESS TO ROOF AND CONTROL CABIN SUPPORT STRUCTURE SUPPLIED BY CUSTOMER.
 - LOADING CRANE MUST HAVE REACH, CAPACITY, & VISIBILITY TO FEED INFEED CONVEYOR AT INDICATED LOAD HEIGHT.

Harris[®]
 12625 WETMORE ROAD, SUITE 120, SAN ANTONIO, TX 78247
 PHONE: 210-403-2087 FAX: 210-403-2051
 www.harrisequip.com

DRAWN BY: RS		DATE: 10/20/11	OAK CLIFF METALS - SN3173	
CHK'D BY: MEH		DATE: 10/20/11	HS6090 - SHREDDER PLANT	
SHEET: 1 OF 1		SCALE: 1/16"=1"	SIZE: D	DRAWING NO. 3173-201
NO. BY DATE		REVISIONS		REV. 2

2	RS	2/22/12	ECS CENTERLINE ADJUSTED/MOVED
1	RS	1/20/12	RELEASE FOR CONSTRUCTION
0	RS	10/21/11	FOR APPROVAL